



CEPHEIDENMETHODE



M31
760 kpc

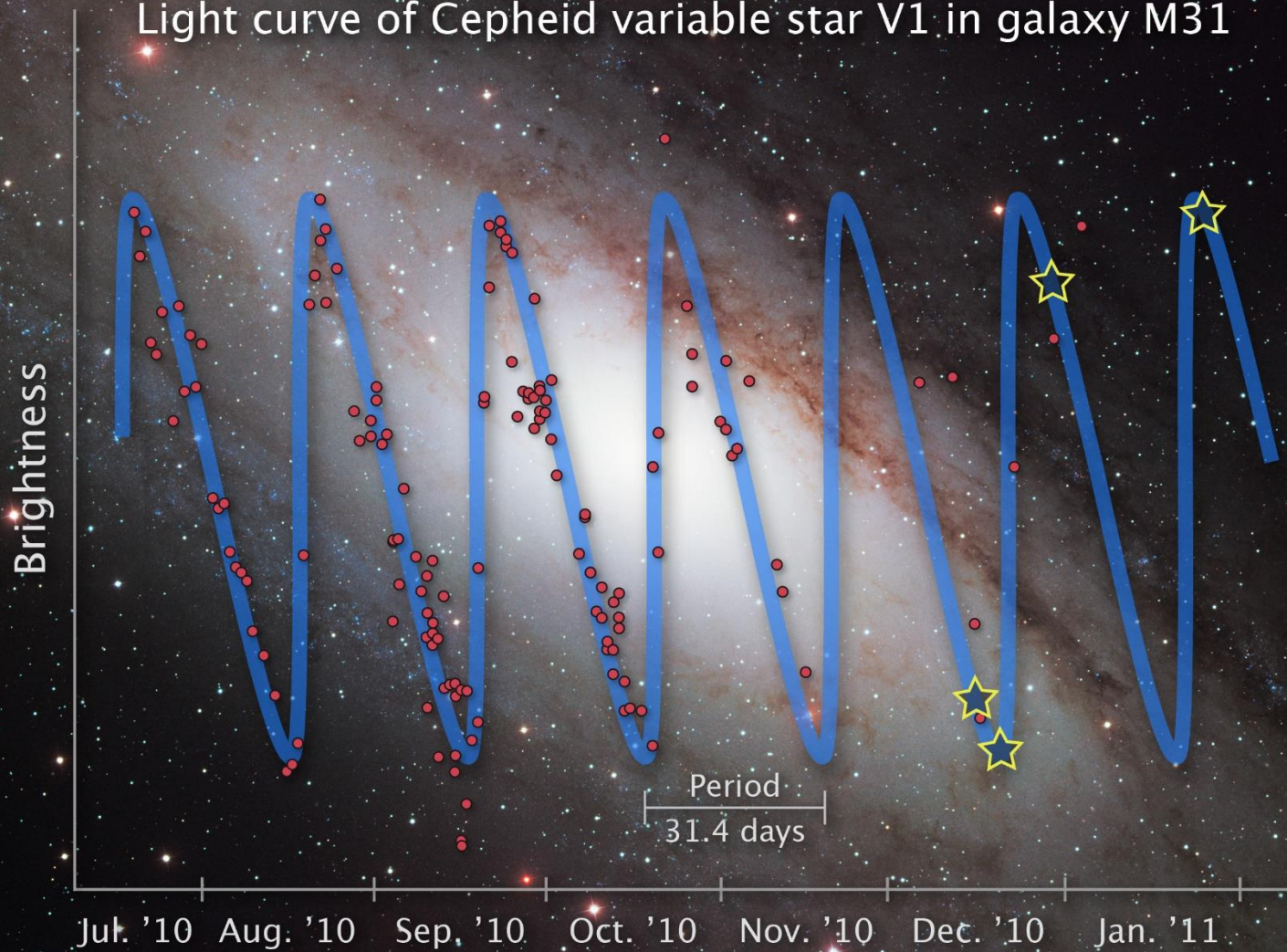
Bild: Cepheid Variable
Star V1 in M31 von
NASA, ESA, the
Hubble Heritage
Team (STScI/AURA)
and R. Gendler via
https://www.nasa.gov/mission_pages/hubble/science/star-v1.html
[Public Domain (PD-USGov)]

Cepheid Variable Star V1 in M31
Hubble Space Telescope ■ WFC3/UVIS

NASA, ESA, the Hubble Heritage Team (STScI/AURA), and R. Gendler

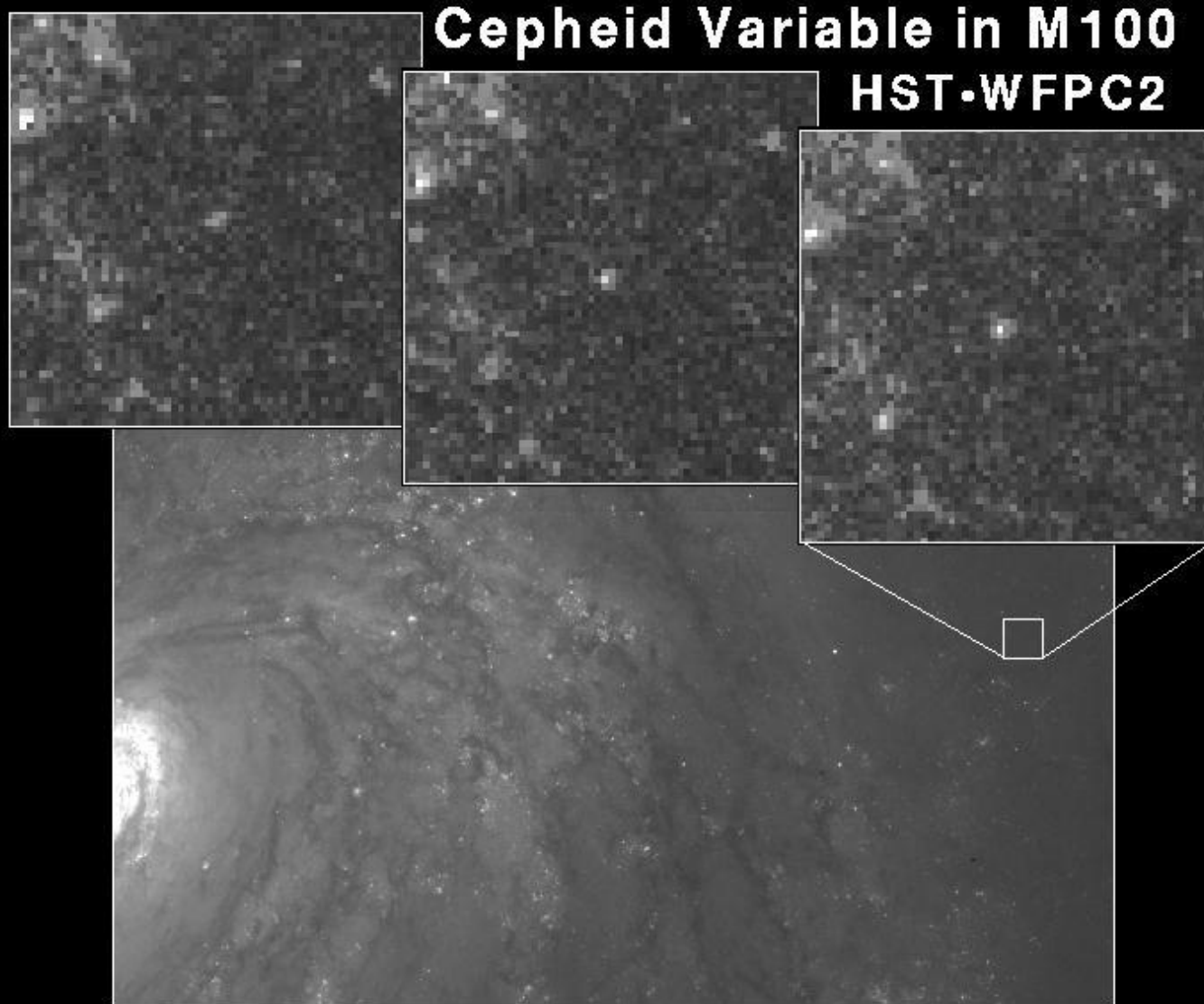
STScI-PRC11-15a

Light curve of Cepheid variable star V1 in galaxy M31



M31
760 kpc

Bild: „opo1115e.jpg“
von NASA, ESA and
Z. Levay (STScI).
Science Credit: NASA,
ESA, the Hubble
Heritage Team
(STScI/AURA) and the
American Association
of Variable Star
Observers via
[https://esahubble.org/
images/opo1115e/](https://esahubble.org/images/opo1115e/)
[CC BY 4.0]



M100
21 Mpc

Bild: Cepheid Variable
Star in Galaxy M100 von
Dr. Wendy L. Freedman,
Observatories of the
Carnegie Institution of
Washington, and
NASA/ESA via
<https://esahubble.org/images/opo9449a/>
[CC BY 4.0]